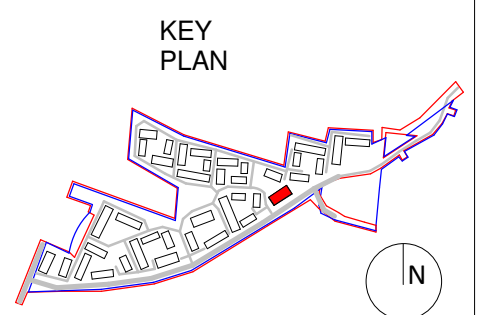


Copyright and ownership of this drawing is vested in RKD Architects, whose prior written consent is required for its use, reproduction or for publication to any third party. All rights reserved by the law of copyright and by international copyright conventions are reserved to RKD Architects and may be protected by court proceedings for damages and/or injunctions and costs.
RKD Architects' Quality Management Systems are certified to ISO 9001:2015.

- Notes:
- USE
 - 2B4P D1 APT
 - 2B4P D2 APT
 - 2B4P D3 APT
 - 3B5P D4 APT
 - BACK OF HOUSE
 - COMMUNAL AREAS
 - BIKE STORAGE
 - REFUSE STORE



1 First Floor Plan - GA
1 : 100



Rev.	Date	Description
P1	MAY 2022	PLANNING SUBMISSION

Beo Properties Ltd	
STATUS	PLANNING
PROJECT	Ratoath South SHD
PROJECT ADDRESS	Ratoath South, Co. Meath
DWG TITLE	Apartment Block K - Level 01
DWG NO.	21088-RKD-ZZ-01-DR-A-1111-K
REV.	P1
STATUS	A3
PROJECT NO.	21088
SCALE	1 : 100
DATE	May 2022
DRN	ROC
CHK	DC

