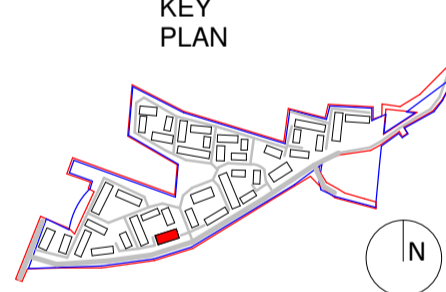
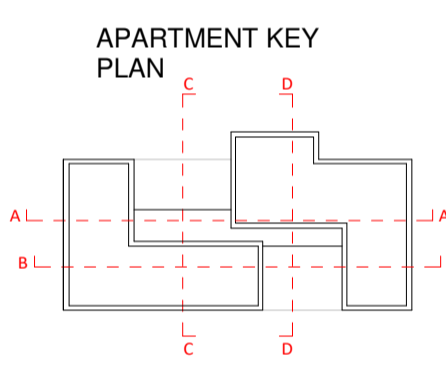


Copyright and ownership of this drawing is vested in RKD Architects, whose prior written consent is required for its use, reproduction or for publication to any third party. All rights reserved by the law of copyright and by international copyright conventions are reserved to RKD Architects and may be protected by court proceedings for damages and/or injunctions and costs.
 RKD Architects: Quality Management Systems are certified to ISO 9001:2015.

Notes:

- USE**
- 2B4P D1 APT
 - 2B4P D2 APT
 - 2B4P D3 APT
 - 3B5P D4 APT
 - BACK OF HOUSE
 - COMMUNAL AREAS
 - BIKE STORAGE
 - REFUSE STORE

- MATERIALITY KEY**
- A Selected Brick Finish
 - B Aluminium Finished Double Glazed Windows
 - C Aluminium Balcony Railing
 - D Precast Sills
 - E Perforated Metal Screens
 - F Selected Coloured Brick
 - G Selected Brick Soldier Course
 - H Selected Render Finish



1 Section C-C
1 : 100



2 Section D-D
1 : 100

Rev.	Date	Description
P1	May 2022	Planning Submission

Beo Properties Ltd

STATUS PLANNING

PROJECT Ratoath South SHD

PROJECT ADDRESS Ratoath South, Co. Meath

DWG TITLE Apt Block C - Sections Sheet 2 of 2

DWG NO 21088-RKD-ZZ-ZZ-DR-A-1213-C

REV.	STATUS	PROJECT NO.
P1	A3	21088

SCALE 1 : 100
DATE May 2022 DRN ROC CHK DC

