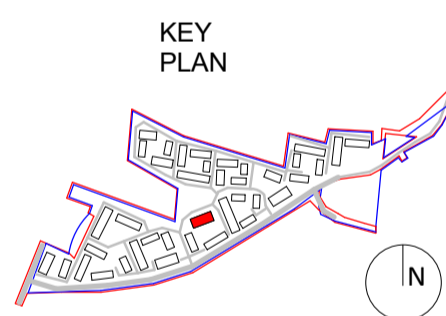
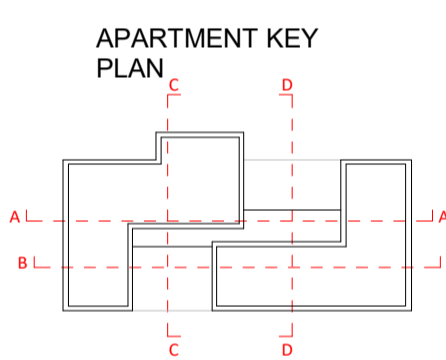


Copyright and ownership of this drawing is vested in RKD Architects, whose prior written consent is required for its use, reproduction or for publication to any third party. All rights reserved by the law of copyright and by international copyright conventions are reserved to RKD Architects and may be protected by court proceedings for damages and/or injunctions and costs.
 RKD Architects' Quality Management Systems are certified to ISO 9001:2015.

Notes:

- USE**
- 2B4P D1 APT
 - 2B4P D2 APT
 - 2B4P D3 APT
 - 3B5P D4 APT
 - BACK OF HOUSE
 - COMMUNAL AREAS
 - BIKE STORAGE
 - REFUSE STORE
 - COMMERCIAL H1
 - COMMERCIAL H2
 - COMMERCIAL H3
 - COMMERCIAL H4

- MATERIALITY KEY**
- (A) Selected Brick Finish
 - (B) Aluminium Finished Double Glazed Windows
 - (C) Aluminium Balcony Railing
 - (D) Precast Sills
 - (H) Selected Render Finish
 - (I) Selected Brick Soldier Course



Rev.	Date	Description
P1	MAY 2022	Planning Submission

P1		MAY 2022	Planning Submission
Beo Properties Ltd			
STATUS PLANNING			
PROJECT Ratoath South SHD			
PROJECT ADDRESS Ratoath South, Co. Meath			
DWG TITLE APARTMENT BLOCK H SECTIONS-SHEET 2 OF 2			
DWG NO. 21088-RKD-ZZ-ZZ-DR-A-1215-H			
REV.	STATUS	PROJECT NO.	21088
P1	A3	SCALE	1 : 100
DATE	May 2022	DRN	ROC
		CHK	DC

