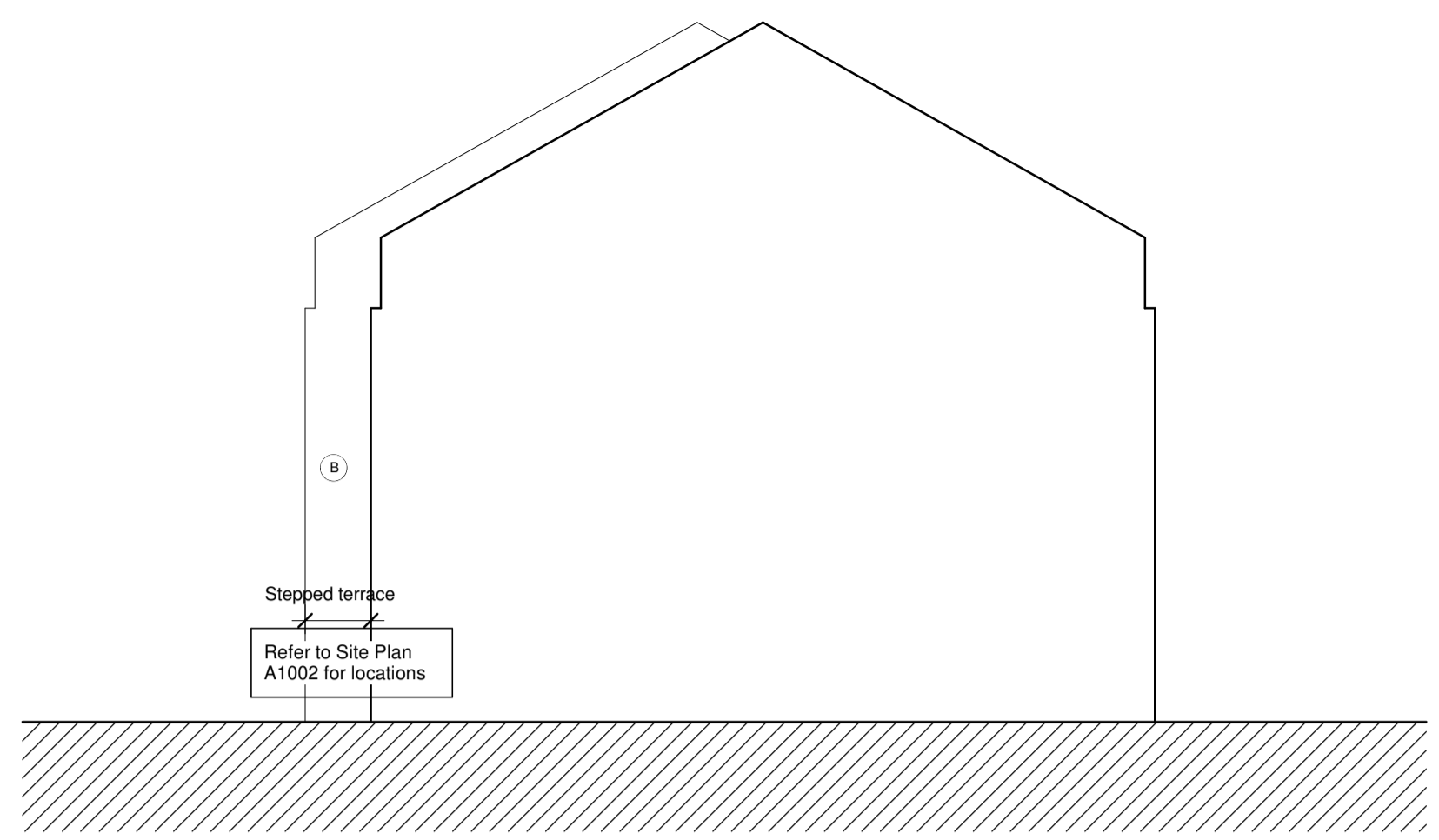
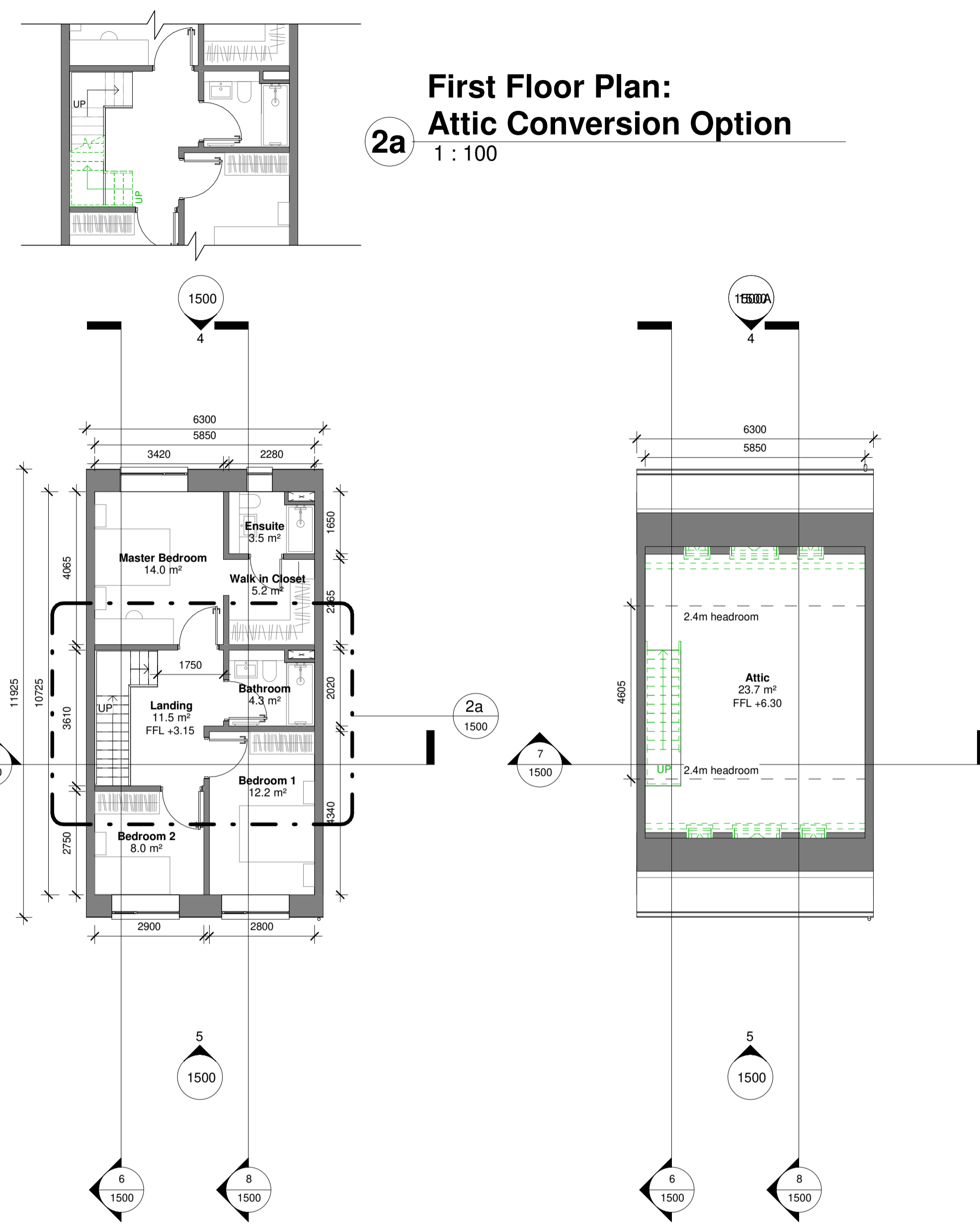


All dimensions to be checked on site. Figured dimensions take preference over scaled dimensions. Any errors or discrepancies to be reported to the Architects. This drawing may not be edited or modified by the recipient.

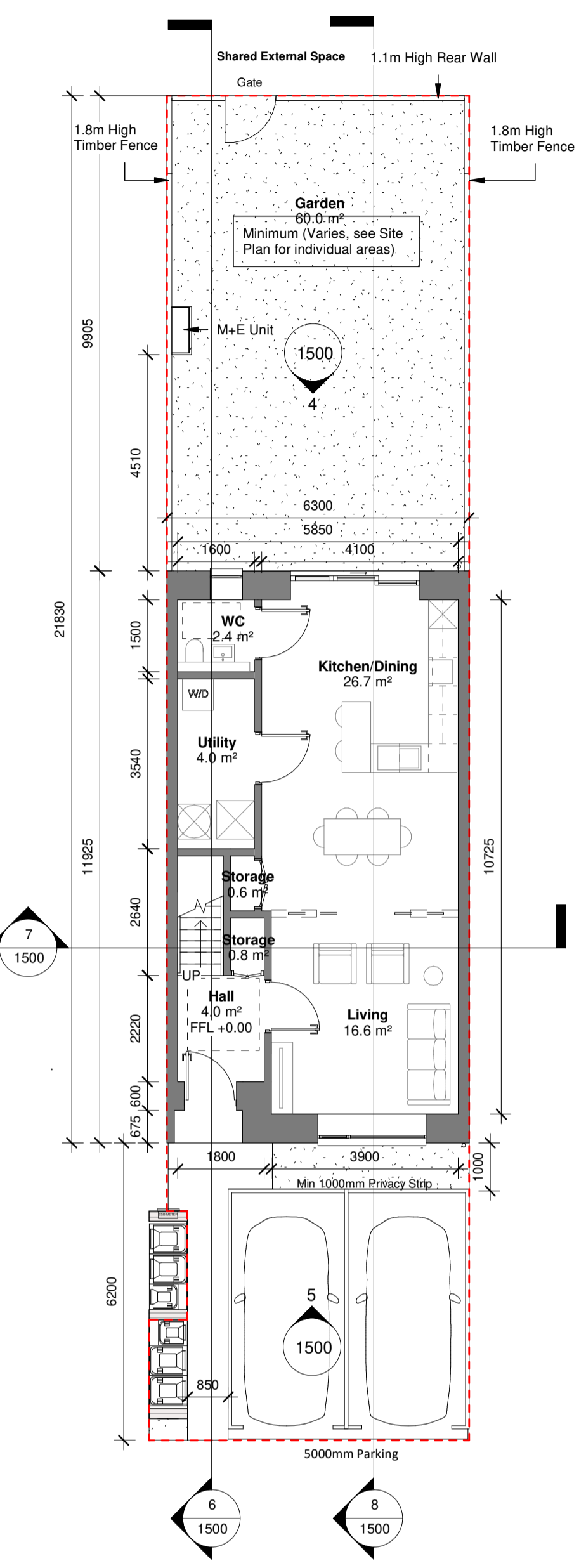
Copyright and ownership of this drawing is vested in RKD Architects, whose prior written consent is required for its use, reproduction or for publication to any third party. All rights reserved by the law of copyright and by international copyright conventions are reserved to RKD Architects and may be protected by court proceedings for damages and/or injunctions and costs.

RKD Architects' Quality Management Systems are certified to ISO 9001:2015.

**First Floor Plan:  
Attic Conversion Option**  
1 : 100



**9 Stepped Terrace Condition**  
1 : 100



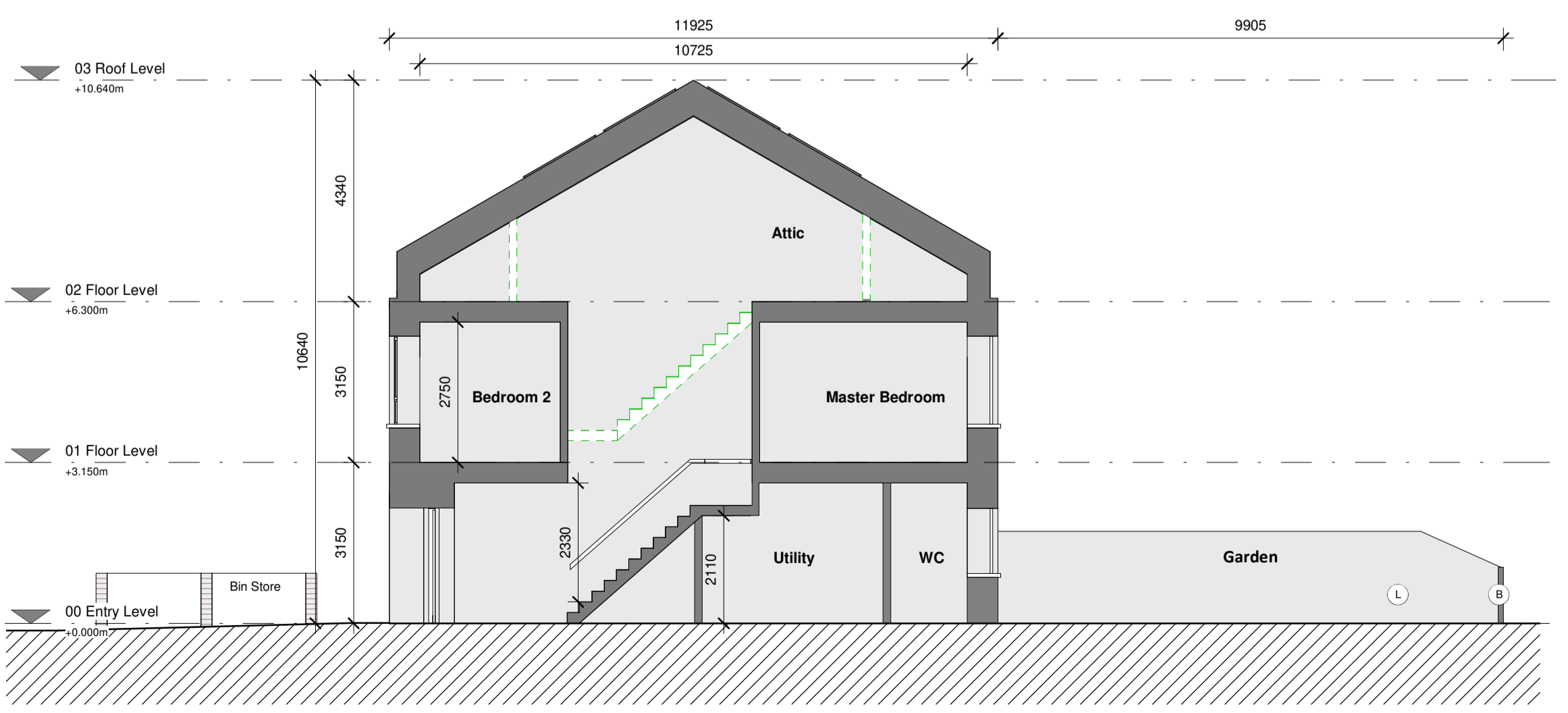
**1 Ground Floor Plan**  
1 : 100

**2 First Floor Plan**  
1 : 100

**3 Attic Floor Plan**  
1 : 100

**4 Rear Elevation**  
1 : 100

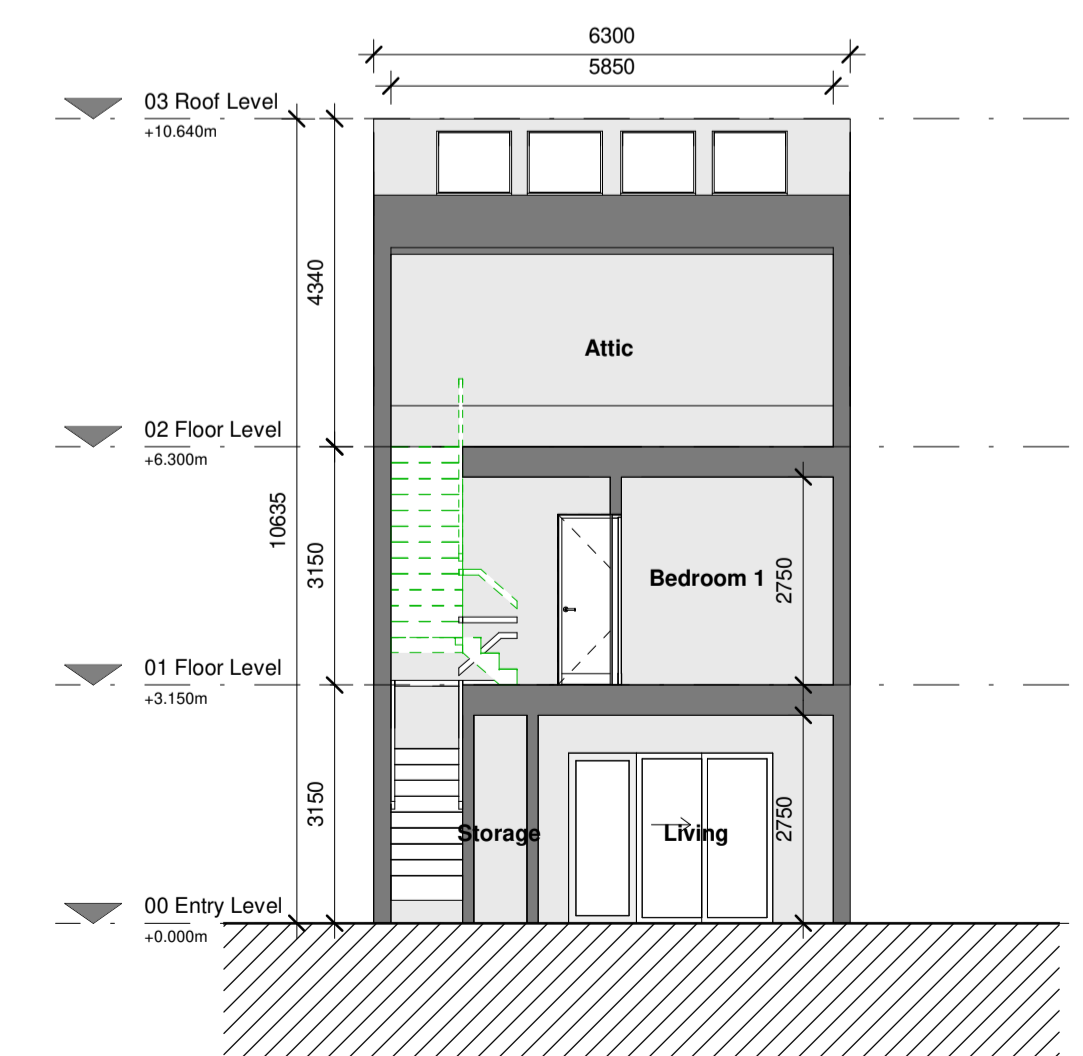
**5 Front Elevation**  
1 : 100



**6 Section A**  
1 : 100



**8 Section B**  
1 : 100



**7 Section C**  
1 : 100

**UNIT TYPE A1**

- Plot Curtilage
- 3 Bed 2 Storey Terrace House

Attic Conversion Option

NOTE: UNIT TYPE INCLUDES OPTIONAL ATTIC CONVERSION, LAYOUT, STAIRS & ELEVATION VARIATIONS INDICATED BY DASHED GREEN LINES

**MATERIALITY KEY**

- A Selected Brick Finish
- B Selected Render Finish
- C Roofing Tile
- D Coloured Brick Detail
- E Selected Brick Solder Course
- F Opaque Glass
- G Solar Panel
- H Aluminium Finished Double Glazed Windows
- I External Bin Store
- J Selected Brick Pattern Detail
- K Roof Window (Attic Conversion Option)
- L Timber Garden Fence

NOTE: See Architectural Design Statement for selected colours and materials

NOTE: Gable End Option available. See A1500A for details.

**A1 - 3 Bed, 5 Person (2 storey)**

Name	Target Areas (m2)	Proposed Areas (m2)
Living	13.0 m <sup>2</sup>	16.6 m <sup>2</sup>
Kitchen/Dining	13.0 m <sup>2</sup>	26.7 m <sup>2</sup>
Master Bedroom	11.4 m <sup>2</sup>	14.0 m <sup>2</sup>
Bedroom 1	11.4 m <sup>2</sup>	12.2 m <sup>2</sup>
Bedroom 2	7.1 m <sup>2</sup>	8.0 m <sup>2</sup>

Gross Floor Area	92.0 m <sup>2</sup>	124.2 m <sup>2</sup>
Internal area excluding stair void	92.0 m <sup>2</sup>	119.4 m <sup>2</sup>
Aggregate Bedroom	32.0 m <sup>2</sup>	34.1 m <sup>2</sup>
Aggregate Living	34.0 m <sup>2</sup>	43.3 m <sup>2</sup>
Aggregate Storage	5.0 m <sup>2</sup>	9.3 m <sup>2</sup>
Private Open Space	60.0 m <sup>2</sup>	60.0 m <sup>2</sup>

Based on the 'Quality Housing for Sustainable Communities' Guidelines (2007)

Rev.	Date	Description
P1	MAY 2022	Planning Submission

CLIENT: Beo Properties Ltd

STATUS: PLANNING

PROJECT: Ratoath South SHD

PROJECT ADDRESS: Ratoath South, Co. Meath

DWG TITLE: TERRACED HOUSE A1

DWG NO: 21088-RKD-ZZ-ZZ-DR-A-1500

REV.	STATUS	PROJECT NO.
P1	A3	21088

SCALE: 1 : 100  
DATE: MAY 2022  
DRN: CNAB  
CHK: DC

