

All dimensions to be checked on site. Figured dimensions take preference over scaled dimensions. Any errors or discrepancies to be reported to the Architects. This drawing may not be edited or modified by the recipient.

Copyright and ownership of this drawing is vested in RKD Architects, whose prior written consent is required for its use, reproduction or for publication to any third party. All rights reserved by the law of copyright and by international copyright conventions are reserved to RKD Architects and may be protected by court proceedings for damages and/or injunctions and costs.

RKD Architects' Quality Management Systems are certified to ISO 9001:2015.

Notes:

UNIT TYPE M6

- Plot Curtilage
- 3 Bed 2 Storey Maisonette
- Part M Ground Unit See Drawing A1524

MATERIALITY KEY

- A Selected Brick Finish
- B Selected Render Finish
- C Roofing Tile
- D Stone Capping
- E Coloured Brick Detail
- F Selected Brick Soldier Course
- G Opaque Glass
- H Solar Panel
- I Aluminium Finished Double Glazed Windows
- J External Bin Store
- K Selected Brick Pattern Detail
- L Roof Window
- M Selected Finish Cladding Board
- N Timber Fence

NOTE: See Architectural Design Statement for selected colours and materials

M6 - 3 Bed, 5 Person Terrace Maisonette Upper

Name	Minimum Area (m ²)	Proposed Area (m ²)
Kitchen Living Dining	34.0 m ²	40.2 m ²
Bedroom 1	7.1 m ²	9.0 m ²
Bedroom 2	11.4 m ²	12.3 m ²
Master Bedroom	13.0 m ²	17.2 m ²
Gross Floor Area	90.0 m ²	144.3 m ²
Internal area excluding stair void	90.0 m ²	134.8 m ²
Aggregate Bedroom	31.5 m ²	38.5 m ²
Aggregate Living	34.0 m ²	40.2 m ²
Aggregate Storage	9.0 m ²	10.9 m ²
Private Amenity	9.0 m ²	9.0 m ²

Based on the 'Sustainable Urban Housing: Design Standards for New Apartments' Guidelines (Dec 2020)
 Note: These guidelines are based on single floor units

Rev.	Date	Description
P1	MAY 2022	Planning Submission

Beo Properties Ltd

STATUS **PLANNING**

PROJECT **Ratoath South SHD**

PROJECT ADDRESS **Ratoath South, Co. Meath**

DWG TITLE **Maisonette 3 -Storey Upper Unit**

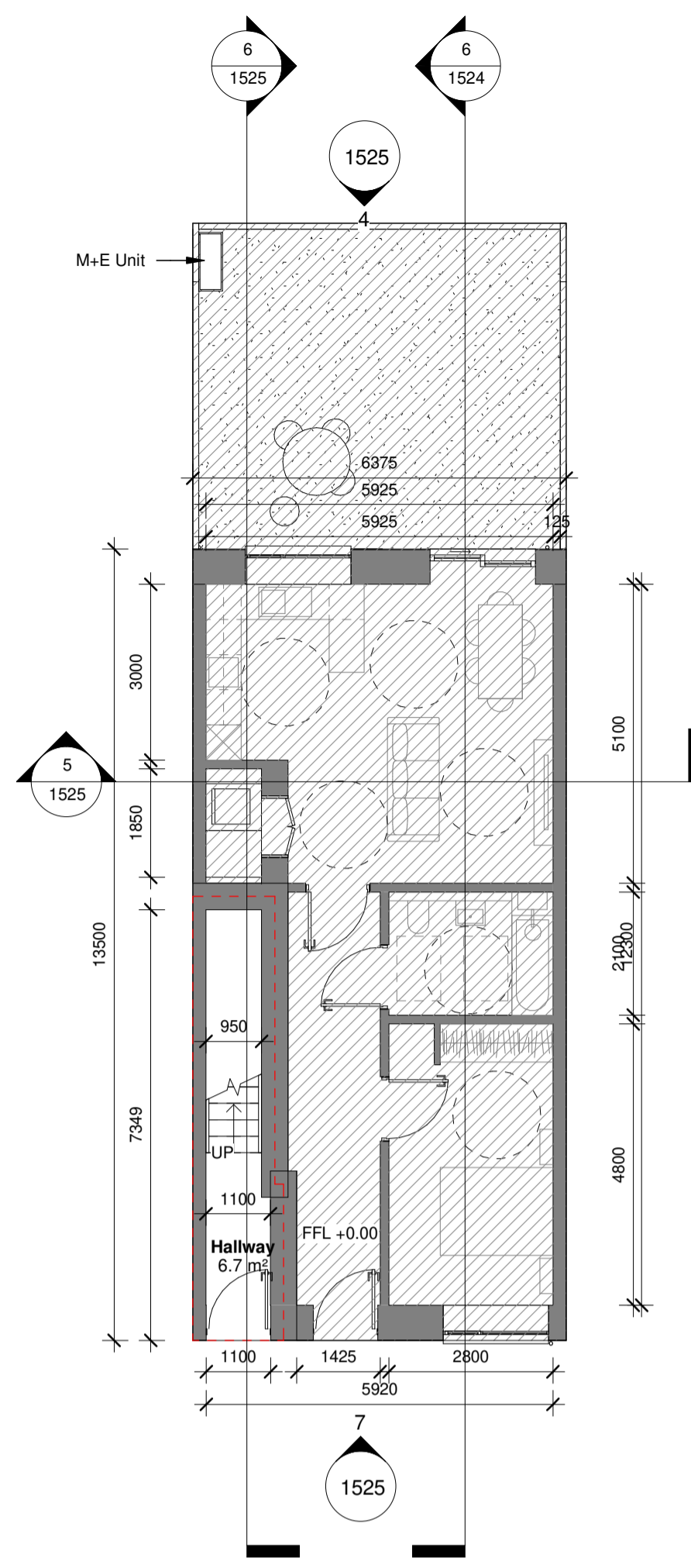
DWG NO. **21088-RKD-ZZ-ZZ-DR-A-1525**

REV.	STATUS	PROJECT NO.
P1	A3	21088

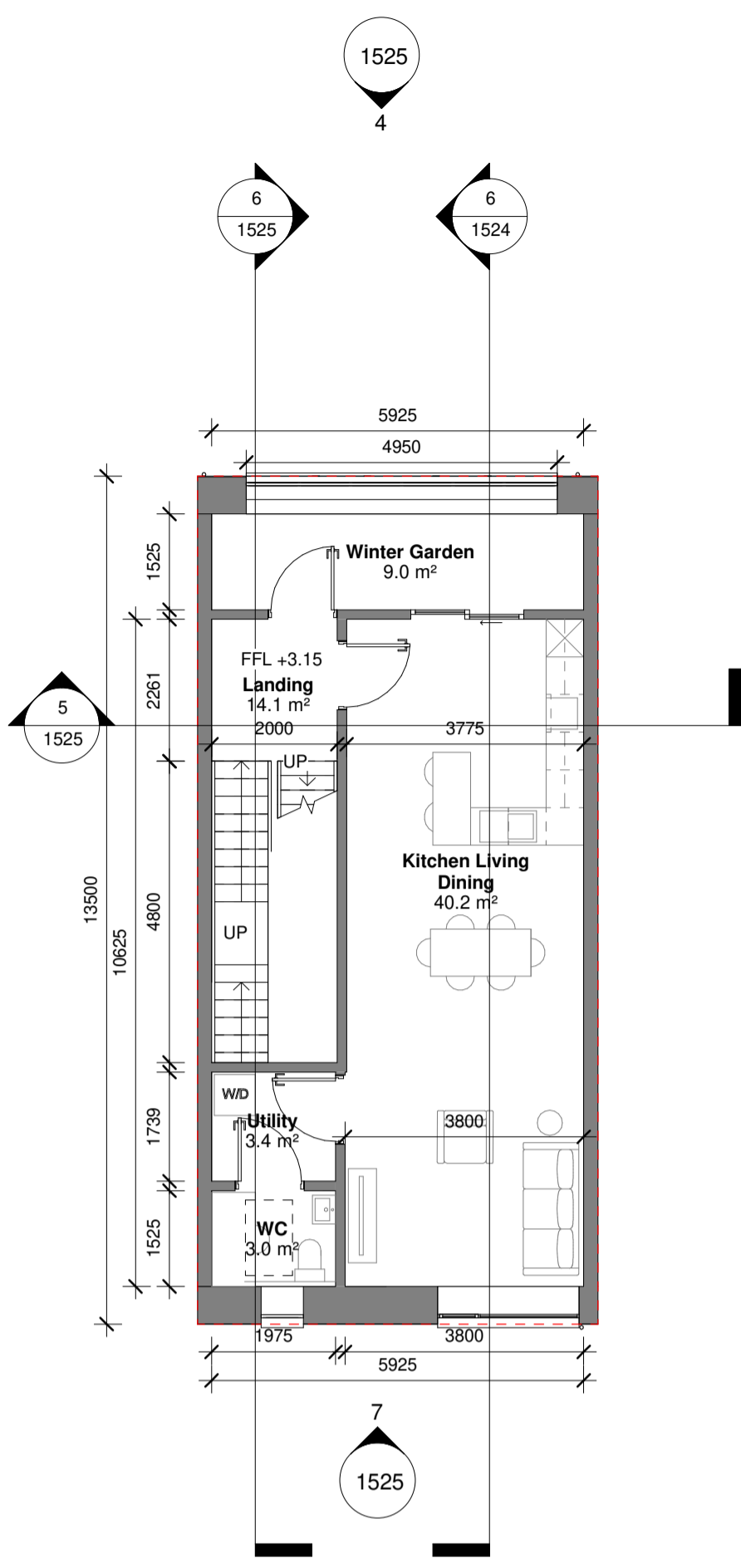
SCALE **1 : 100**
 DATE **MAY 2022** DRN **JB** CHK **DC**

RKD
 59 Northumberland Rd
 Ballybrack, Dublin 4
 D04 W9P6, Ireland

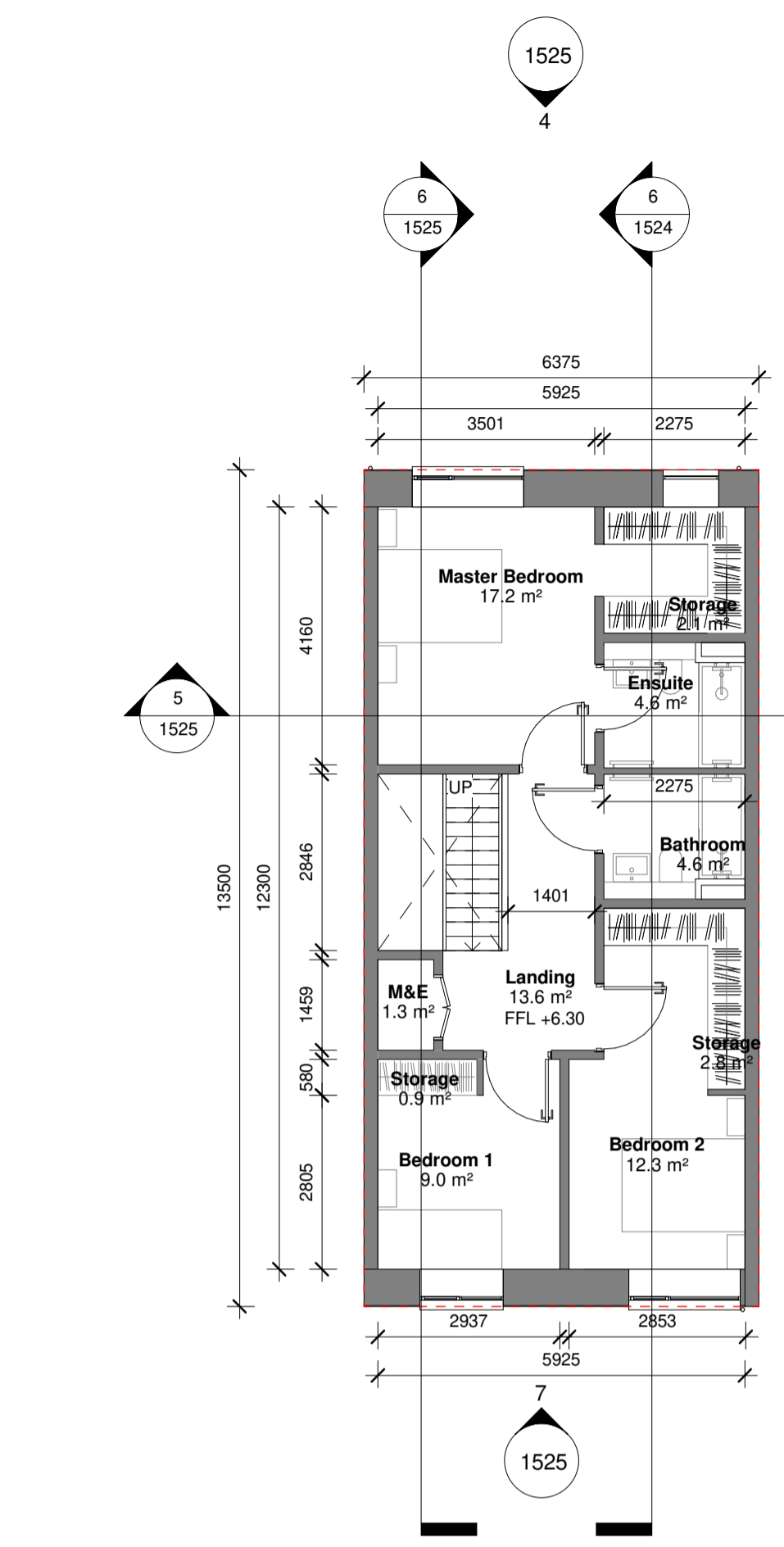
+353 1 668 1055
 mail@rkd.ie
 rkd.ie



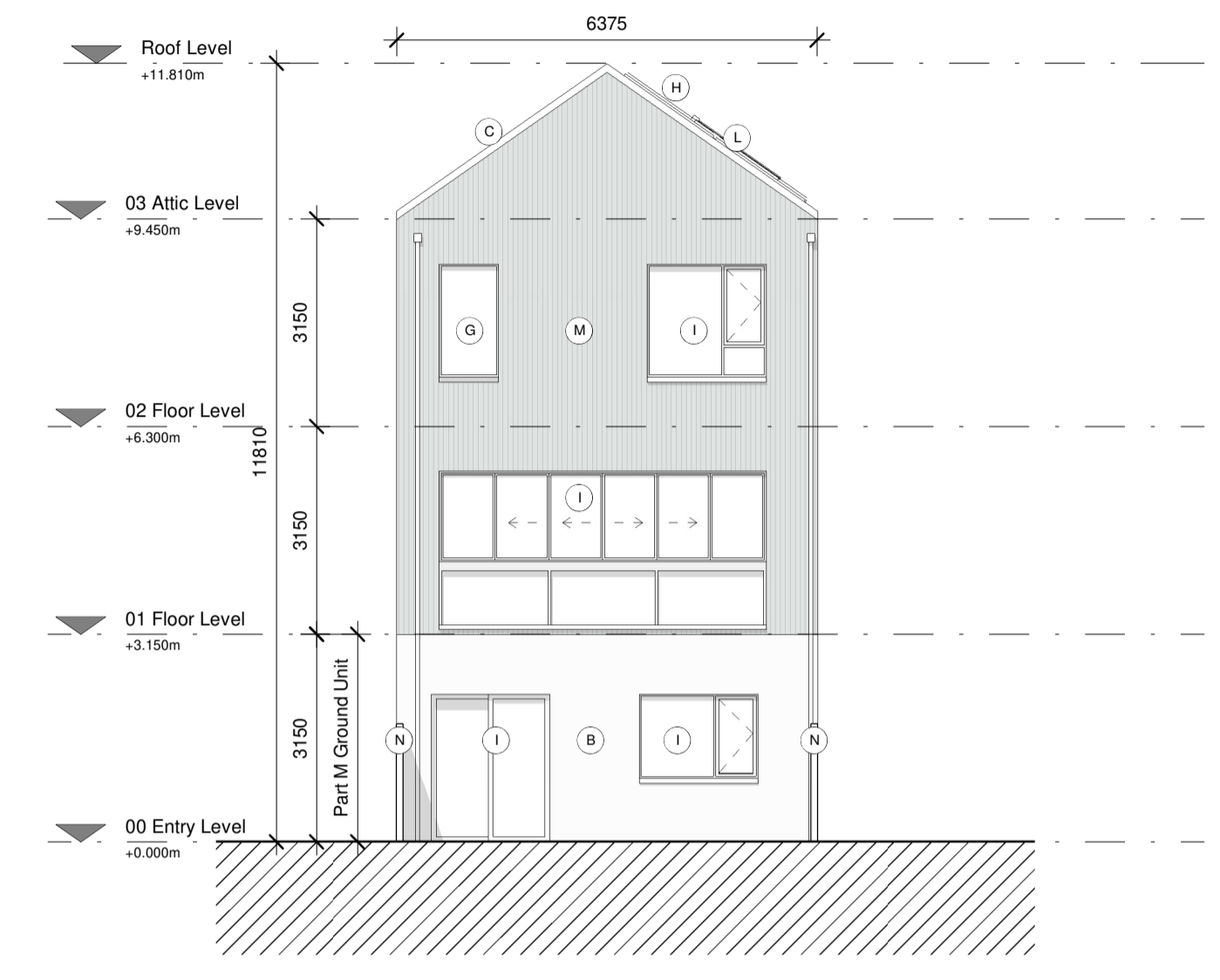
1 Ground Floor (Entrance Level)
1 : 100



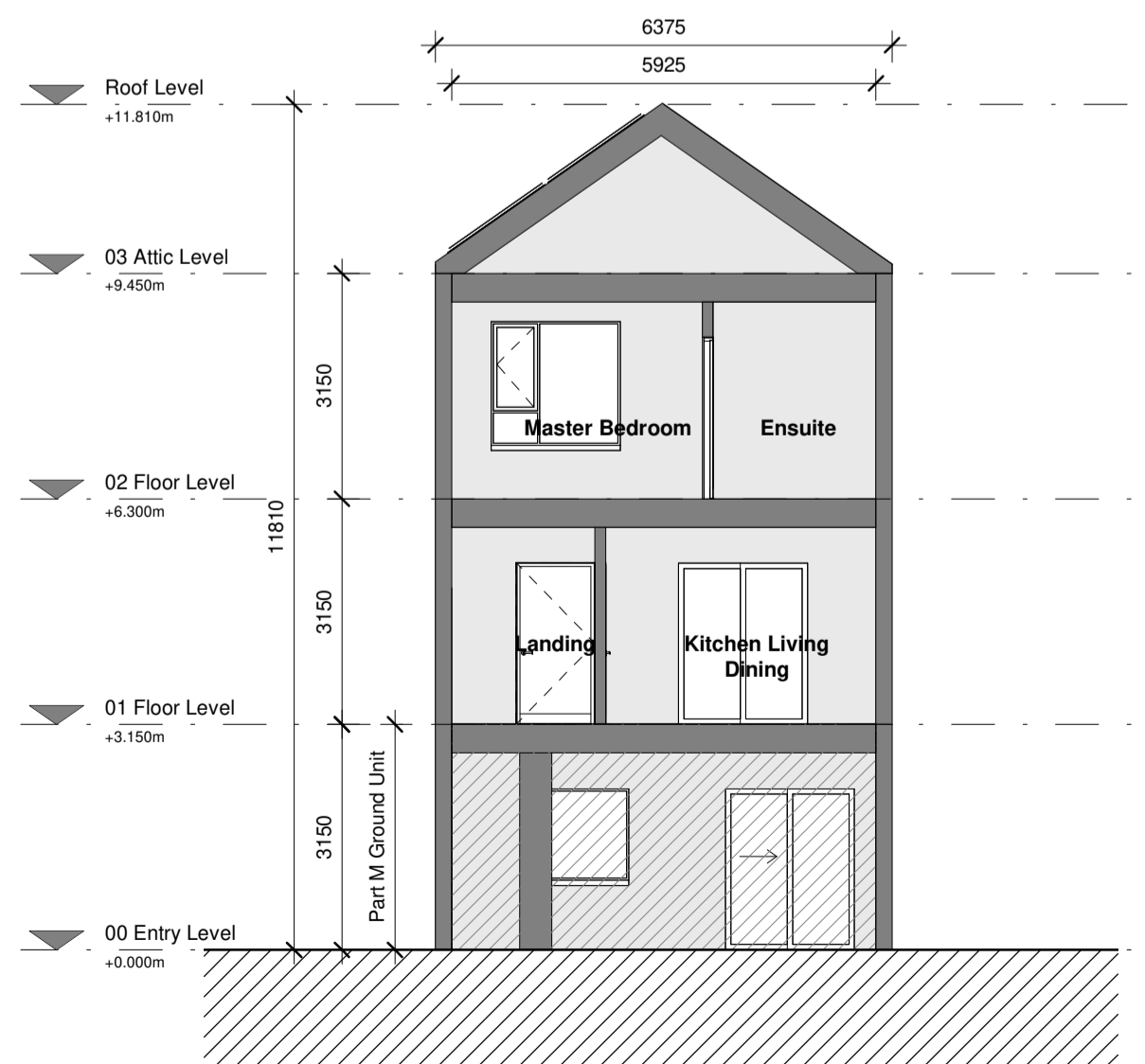
2 First Floor
1 : 100



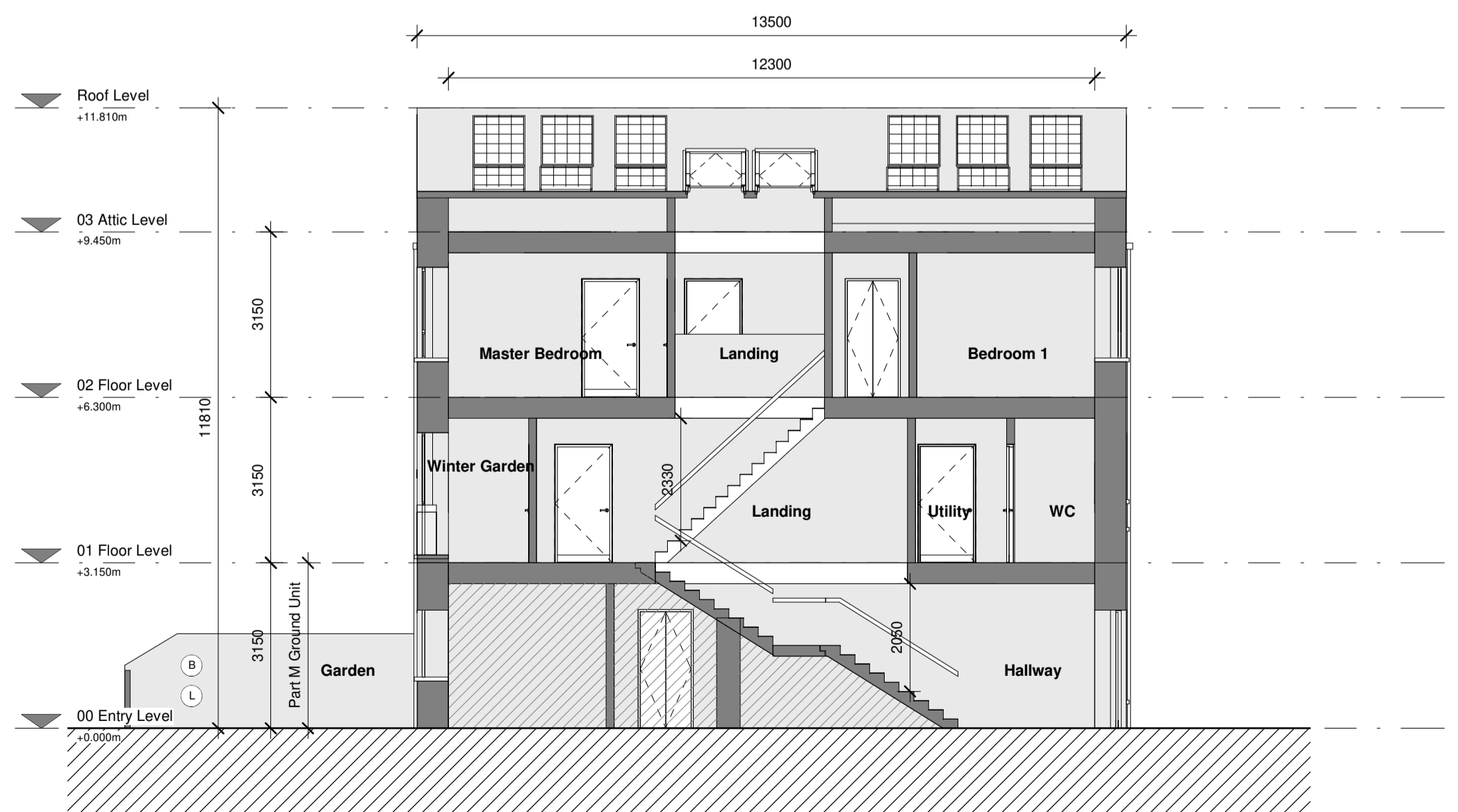
3 Second Floor
1 : 100



4 Rear Elevation
1 : 100



5 Section A
1 : 100



6 Section B
1 : 100



7 Front Elevation
1 : 100